

Business Computers
Software, Inc.

Time Matrix
Time Clock

 Microsoft Dynamics GP



Time Matrix from Business Computers Software, Inc., is fully integrated to Microsoft Dynamics GP and offers the same "look and feel."

Microsoft
GOLD CERTIFIED
Partner

Time Matrix

for Microsoft Business Solutions-Great Plains with Touch Screen Monitor In-Out Board

ID	First	Last	In	Out	Return Date	Return Time	Remark
ALVA000	Alicia	Alvarza	<input type="radio"/>	<input checked="" type="radio"/>	9/5	Morning	Gone Home <small>Work at Home</small>
ATKI0001	Paul	Atkins	<input checked="" type="radio"/>	<input type="radio"/>			
BANK000	Katherine	Banks	<input type="radio"/>	<input checked="" type="radio"/>	9/5	8:30	Holiday
BLAC000	Thomas	Black	<input checked="" type="radio"/>	<input type="radio"/>			
BURN000	Darlene	Burnell	<input type="radio"/>	<input checked="" type="radio"/>	9/12	Unknown	Vacation <small>Aspen Ski Resort</small>

Time Matrix from Business Computers Software, Inc., is a full-featured time system fully integrated with Microsoft Business Solutions-Great Plains.

Time Matrix has the same "look and feel" as other Great Plains modules because it was developed in Dexterity – the programming language used for Great Plains. This provides true integration with Great Plains without old fashioned exports and imports.

The Touch Screen Monitor In-Out Board replaces a conventional board that is hung on the wall by allowing employees to indicate when they are in the building and when they have stepped out. Similar to an ATM machine, the In-Out Board can easily be used by "computer-challenged" employees. Although a touch screen monitor is recommended for the convenience of such employees, the In-Out Board can be run by a standard monitor, mouse, and keyboard.

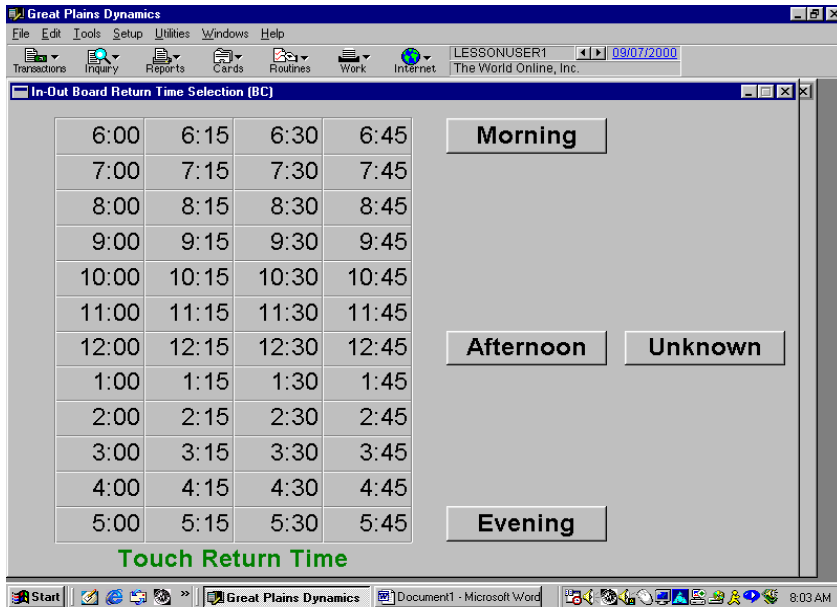
The In-Out Board enables receptionists to inform callers of when they can expect their call to be returned, and the Employee Control Center allows calls to be logged for view by the employees when they return to work.

Employees can be sorted by using either their first name, last name, or employee ID. Touching the magnifying glass associated with one of these three means of sorting will begin a search for a specific employee. Once the individual has been found, his or her status will be displayed on the monitor.

Touching the "Out" radial button, displays a calendar that allows for the return date of an employee to be selected. Next, the return time may be chosen, and finally the location or destination of the employee may be chosen from a list of possibilities. Once the "Select" button on the location menu has been clicked, the In-Out Board will again be displayed. When the employee arrives back at the building, touching the "In" radial button clears the Return Date, Return Time, and Out Location fields.

Learning is fast and easy for employees because it works like Great Plains.

Contact your local Microsoft Business Solutions-Great Plains reseller to discover how Time Matrix can work for you.



Enter Return Time

- The Return Time menu is accessed by touching the “Out” radial button on the In-Out Board and then by choosing a return date.
- Touching any of the times on the menu will automatically enter that time on the In-Out Board, close the Return Time menu and open the Out Location lookup.
- If the return time was entered inaccurately or if it changes after being entered, it can be amended by clicking on the magnifying glass next to the Return Time field on the In-Out Board.

Enter Out Location

- After selecting a return time, the Out Location lookup will automatically appear.
- The list of location options may be varied depending upon a company’s needs.
- Choosing an employee’s out location and clicking the “Select” button, close the Out Location lookup and display the In-Out Board on the monitor.
- If the out location was entered inaccurately or if it changes after being entered, it can be amended by clicking on the magnifying glass next to the Out Location field on the In-Out Board.

